

# A Quick Guide to Making a design for your “Wonderpass” frame

**Hello** and thank you for agreeing to contribute a design to the “Wonderpass”. It will be great to have your group represented in this community public art work!

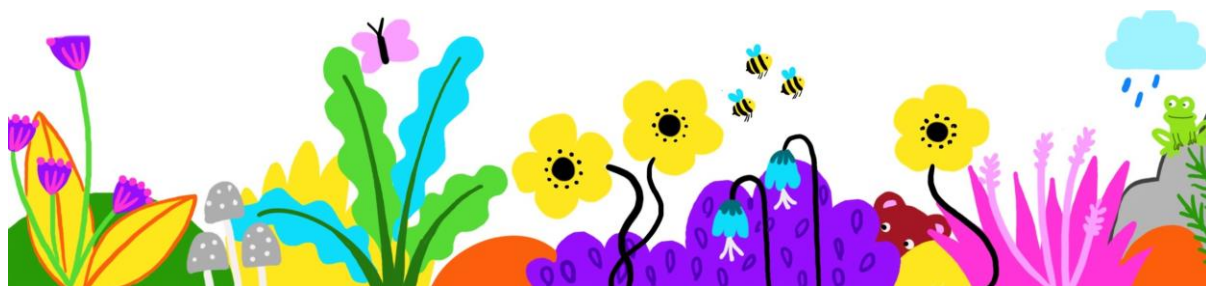
Your design can be painted or drawn onto paper in any medium, e.g. poster paints, watercolour paints, felt pens, coloured pencils, or even a photocopied logo. The design that you make will then be reproduced in acrylic paints onto the wall of the underpass, within a drawn decorative frame, either *round*, *square* or *rectangular*.

Painting onto the wall itself can be done by member/s of your group or by me (Bec Barnes, the Wonderpass Project artist) over the Easter holidays. There may be as many as 40 frames in total and they will be ‘hung’ within a magical garden mural!

**Here are a few pointers to get you started:**

**What could your design be?**

- A building or landmark in your village
- Your organisation’s logo
- Something that reflects your community or organisation
- Something from the natural world relevant to our region
- An abstract pattern or design
- The acronym of your club or organisation e.g. MADs



## IMPORTANT THINGS TO CONSIDER:

### When you make your design, please...

- Fill the space **within the frame** as much as you can but don't go beyond the allocated shape.
- Keep it simple!
- Keep words to a minimum
- As the designs will be painted on to the walls of the underpass please **avoid** prints (e.g. handprints), collages, unusual paint effects, etc.
- Your design can be as colourful as you like, or you can use just a few colours. **FLAT COLOURS** are best (no complicated textures or patterns)

## Thank you!



For more information, contact Sarah Grove:

sarahgrove.msfcrcp@gmail.com or 07752 445799

